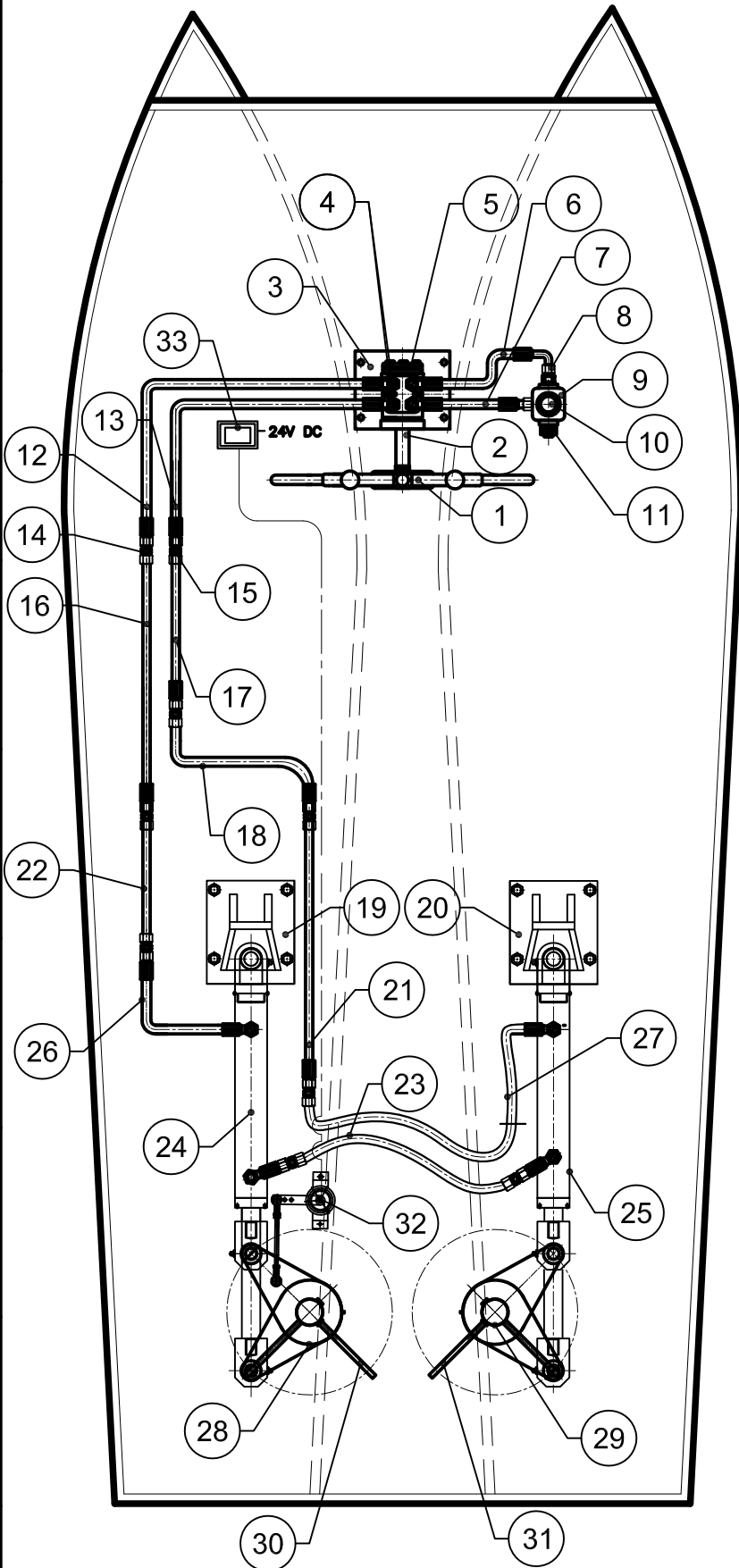


Schematic diagram of Twin Rudder without Connection Rod



1. Steering Wheel
2. Steering Column
3. Vertical Bracket
4. Hyd.Banjo Conn.16x1/2"
5. Helm Pump
6. Hose - 1
7. Hose - 2
8. Male Stud 16x1/2"
9. Oil Reservoir
10. Filler Breather
11. Oil Level Gauge
12. Hose - 3
13. Hose - 4
14. Std. Coupling 16mm.
15. Std. Coupling 16mm.
16. Seamless Steel Tube 16mm.
17. Seamless Steel Tube 16mm.
18. Seamless Steel Tube 16mm.
19. Rear End Bkt. (Customer Supply)
20. Rear End Bkt. (Customer Supply)
21. Seamless Steel Tube 16mm.
22. Seamless Steel Tube 16mm.
23. Hose - 5
24. JumboZ-500 IRS-Port
25. JumboZ-500 IRS-SB
26. Hose - 6
27. Hose - 7
28. Tiller Arm- 1 (Customer Supply)
29. Tiller Arm- 2 (Customer Supply)
30. Rudder Plate - 1 (Customer Supply)
31. Rudder Plate - 2 (Customer Supply)
32. Rudder Angle Sensor
33. Rudder Angle Indicator



MAC ♦ N ♦ HOM SYSTEMS
KOCHI - 20

DESIGNATION

DWG. No.

DATE

Schematic diagram of Twin Rudder
without Connection Rod JumboZ-500

MHS-1007A

28-02-2022

A

B

C

D

E

F

G

H